



## *Essex County, Massachusetts – Cityscapes*

*Here are some views of the ten municipalities in Essex County which are cities.*

*A photo journey created by Anne Ryder Wilson, ESOG, 2022*





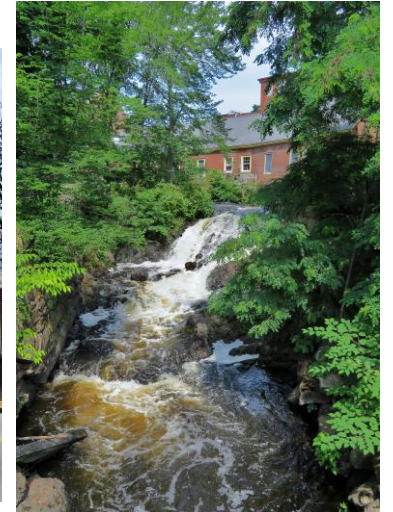
# Amesbury

1630 1930

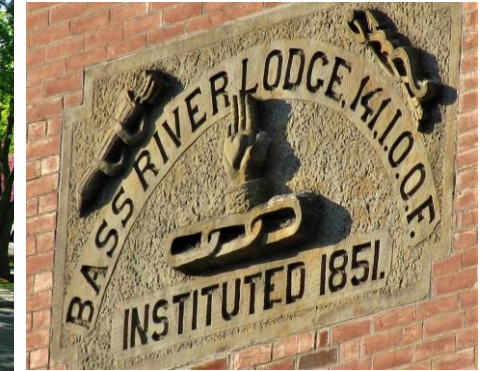
**MACY - COLBY HOUSE**

THOMAS MACY, FIRST TOWN CLERK OF AMESBURY, ERECTED THIS HOUSE PRIOR TO 1654. PERSECUTED FOR HARBORING QUAKERS HE SOLD THE HOUSE TO ANTHONY COLBY AND FLED TO NANTUCKET, BECOMING THE FIRST WHITE SETTLER THERE AS RELATED IN WHITTIER'S POEM "THE EXILES".

MASSACHUSETTS BAY COLONY  
TERCENTENARY COMMISSION



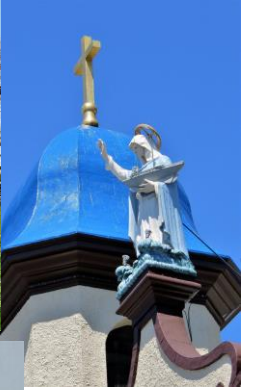




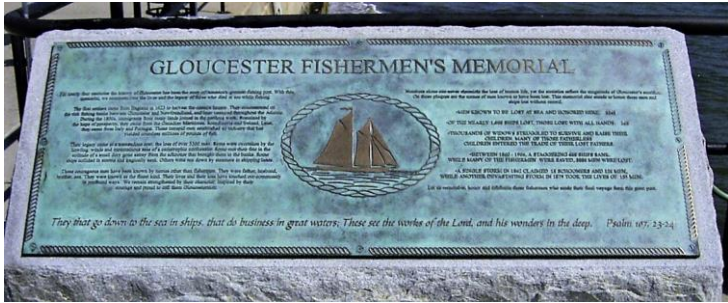
Beverly



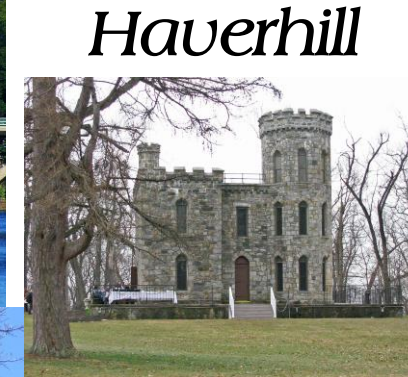




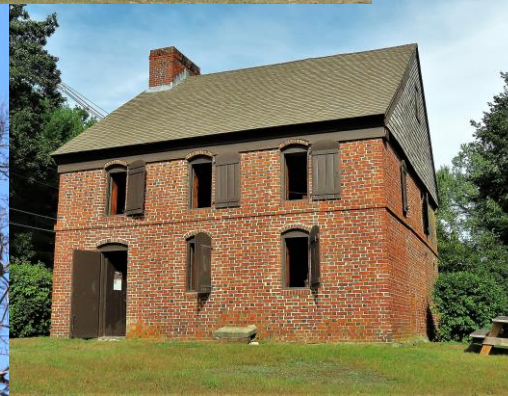
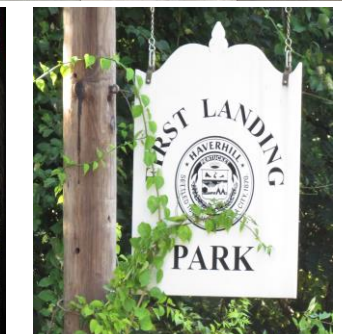
# Gloucester







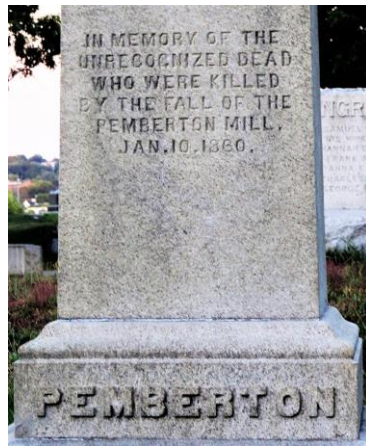
# Haverhill



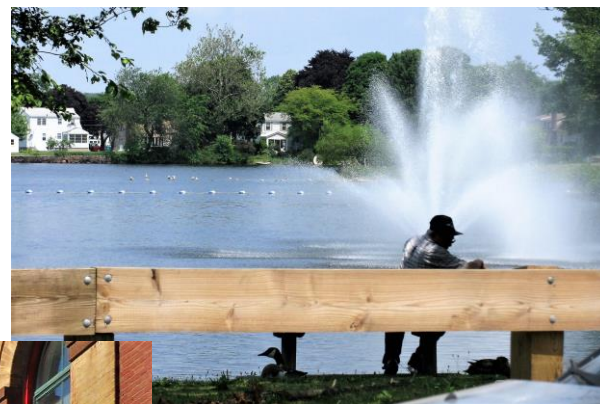
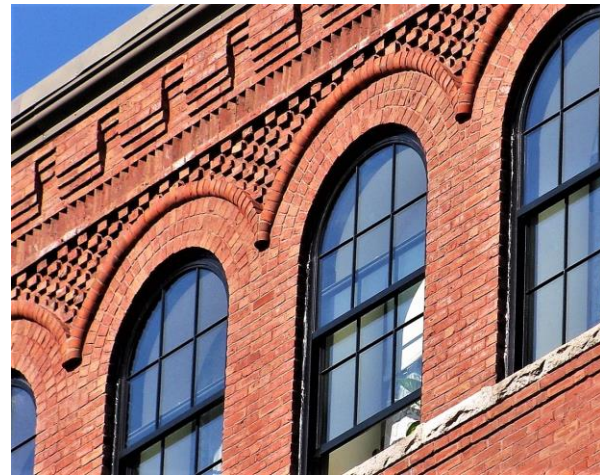




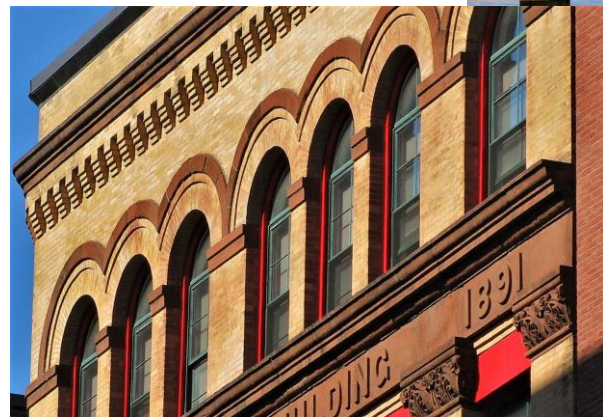
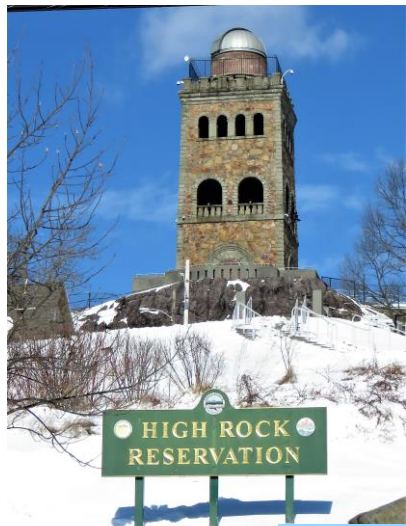
# Lawrence







Lynn







# Methuen



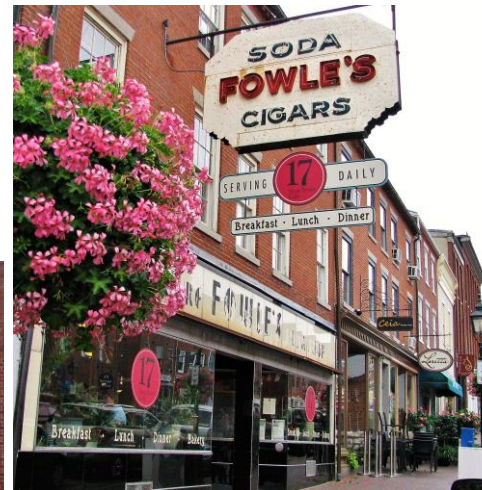
## Lawrence Street Cemetery

— THE —  
SEARLES  
TENNEY  
NEVINS  
TRAIL  
METHUEN, MASSACHUSETTS

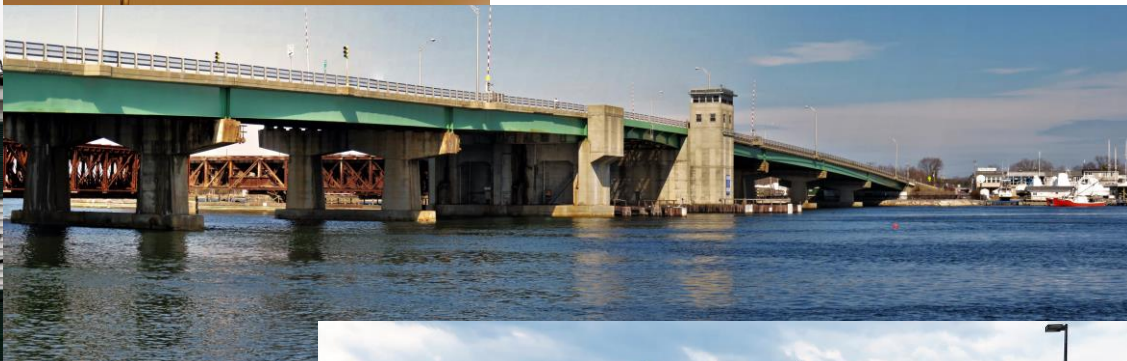
This is Methuen's third oldest burial ground. In 1832, the Town purchased this 1.6 acre site for a new cemetery, signifying the shift of the town center from Meetinghouse Hill to present day Gaunt Square. Later in the 19th century, Edward F. Searles constructed the 8-foot high granite wall around the north and west sides of the cemetery. Searles' parents, two siblings and Searles' wife, Mary Hopkins Searles, are buried here. The granite gatehouse and Mary Searles' tomb were built by Searles in 1891.







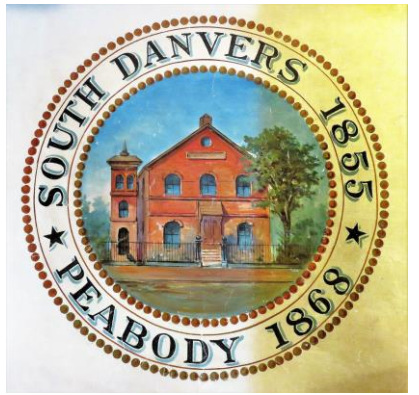
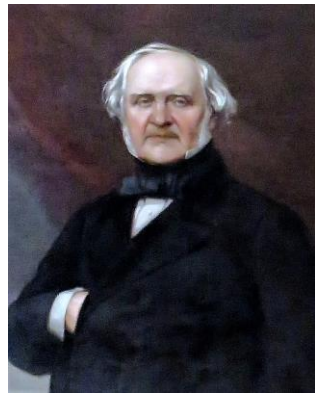
# Newburyport







# Peabody





# Salem

